



City of Los Altos

Civic Center Master Plan
Stakeholder Engagement Meeting
Planning Focus

April 16, 2014



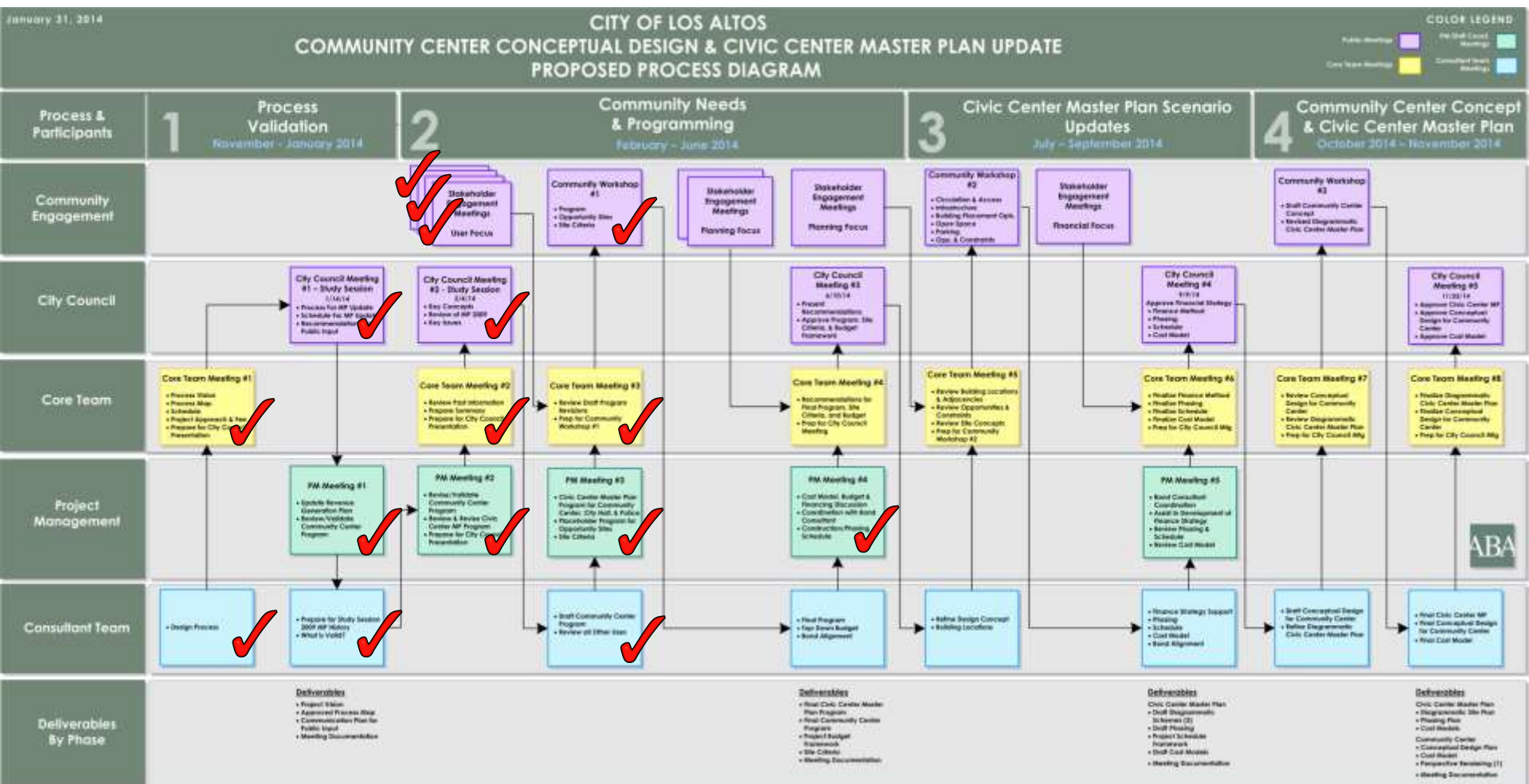


Agenda

- Introduction
- Review Community Needs
- Recommended Program
- Review Site Opportunities & Challenges
- Review Site Criteria
- Community Center Focus
- Civic Center “Element” Placement
- Summary of Findings
- Public Comment
- Conclusion



Process Overview





Community Needs

Input on Priorities & Program





Interior Services Ranking – Combined (1 of 2)

1	Large Group Activities	●	13	Youth Theater Rehearsal	●
2	Social Gathering - Seniors	●	14	Social Gathering - Teens	
2	Social Gathering - General	●	15	Childrens' Services - Non-City Program	●
4	Fitness (w/o Equipment, sprung wood floor)	●	16	Theater Rehearsal (Los Altos Stage Company)	●
5	Special Interest Classes	●	17	Dedicated Outside Organization Spaces	●
6	Camps (Summer, Winter, Spring Break)	●	18	Gaming	
7	Art Room	●	19	Social Gathering - Adults	
8	Staff Offices & Support Space	●	20	Adult Education from High School District	●
9	Table Games	●	21	Pop-up Clinic- Senior	●
9	Gathering w/ Kitchen	●	22	Meeting Space	●
11	Fitness (w/ Equipment)				

● = Current Activities



Interior Services Ranking – Combined (2 of 2)

23	Billiards / Pool - Senior	
24	Theater	
25	Study Center - Teen	
26	Ping Pong- Senior	●
27	Performance Center	
28	Coffee - Senior	●
28	Maker Space - Adult	
28	Misc. Adult Ed. from High School District	●
28	Pool Table/ Ping Pong - Teen	
28	Technology	●
28	Teen - Basketball - Teen	
34	Temp Storage- Senior	●

● = Current Activities



Exterior Services Ranking - Combined

1	Large Group Activities	●	14	Picnicking	●
2	Soccer	●	14	Volleyball - Teen	
3	Baseball	●	16	Dog Park - Teen	
4	Bocce Ball	●	16	Quiet Garden	
5	Swim		16	Underground Parking	
6	Adult Fitness	●	19	Hangout (food, sitting) - Adult	
7	Skate Park		20	Art- Senior	●
8	Playground	●	20	Contemplative Space- Senior	
9	Other Field Sports	●	20	Environmental Demo	
10	Additional Soccer Field		20	Sports Court - Teen	
10	Basketball - Teen				
10	Softball Field				
13	Public Art	●			

● = Current Activities



Suggested Services

Interior
Café
Flooring - sealed surface - Adult
Interior Art Elements
Kiln, ceramic studio, printing press - Adult
Lockers/ showers
Maker Space - Adult
Sinks- centrally located, not in center - Adult
Theater Costume Shop

Exterior
Cricket
Fountain - garden pool area



Community Center Draft Program

Recommended Draft Service Schedule

Priorities Checklist

Recommended Draft Program



Weekday Year Round

Morning

M T W Th F

Midday

M T W Th F

Late Afternoon/Evening

M T W Th F

Rascal Room (Sm Prog)	700 sf																			
Lg Program Rm	1,500 sf	Large Format Activities					Large Format Activities													
Strd Program Rm	1,000 sf																			
Strd Program Rm	1,000 sf																			
Strd Prog Rm w/Demo K	1,270 sf																			
Art Program Rm	1,000 sf						Adult Art					Adult Art								
Art Program Rm	1,000 sf																			
Music Program Room	1,000 sf											Rehearsal								
Fitness Prog Rm	1,000 sf		Dance				Dance					Adult Fitness:								
Fitness Prog Rm	1,000 sf	Adult Fitness:										Dance								
Lg Fitness Prog Rm	2,500 sf	Step		Step								Yoga		Karate		Karate				
Multi Purp Rm	5,000 sf	Jazzercise										Dance/Fitness			LAYC					
Sm Multi Purp Rm	2,500 sf	Yoga					Bingo		Lunch	Movie				Lunch		Adult & Youth Fitness				
Fitness Equip Rm	2,000 sf	Low-Impact Classes			Trng/Workout		Low-Impact Classes			Trng/Workout		Workout					Workout			
Teen Lounge	630 sf											Social Gathering								
Sr Lounge	1,000 sf	Social Gathering					Social Gathering													
Game Room	830 sf											Social Gathering								
Card Lounge	730 sf	Puzzles, Card Games and Lessons					Puzzles, Card Games and Lessons													
Children's Prog Rm	900 sf			Art						Art				Art						
Children's Prog Rm	900 sf	Mommy/Daddy and Me					Mommy/Daddy and Me													



		Weekday Year Round					Midday					Late Afternoon/Evening				
		Morning														
		M	T	W	Th	F	M	T	W	Th	F	M	T	W	Th	F
Rascal Room (Sm Prog)	700 sf															
Lg Program Rm	1,500 sf	Large Format Activities					Large Format Activities									
Strd Program Rm	1,000 sf															
Strd Program Rm	1,000 sf															
Strd Prog Rm w/Demo K	1,270 sf															
Art Program Rm	1,000 sf						Adult Art					Adult Art				
Art Program Rm	1,000 sf											Rehearsal				
Music Program Room	1,000 sf											Adult Fitness:				
Fitness Prog Rm	1,000 sf	Dance					Dance					Dance				
Fitness Prog Rm	1,000 sf	Adult Fitness:										Yoga Karate Karate				
Lg Fitness Prog Rm	2,500 sf	Step		Step								Dance/Fitness AYC				
Multi Purp Rm	5,000 sf	Yoga					Bingo Lunch Movie Lunch					Adult & Youth Fitness				
Sm Multi Purp Rm	2,500 sf	Low-Impact Classes Trng/Workout					Low-Impact Classes Trng/Workout					Workout workout				
Fitness Equip Rm	2,000 sf											Social Gathering				
Teen Lounge	630 sf											Social Gathering				
Sr Lounge	1,000 sf	Social Gathering					Social Gathering					Social Gathering				
Game Room	830 sf															
Card Lounge	730 sf	Puzzles, Card Games and Lessons					Puzzles, Card Games and Lessons									
Children's Prog Rm	900 sf			Art					Art							Art
Children's Prog Rm	900 sf	Mommy/Daddy and Me					Mommy/Daddy and Me									

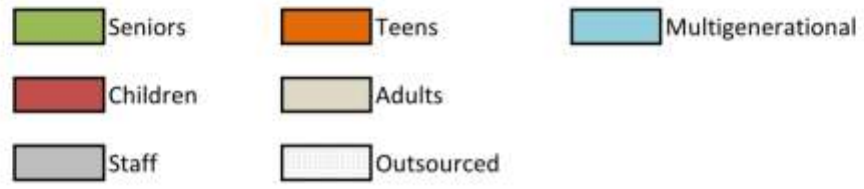
Seniors
 Teens
 Multigenerational

Children
 Adults

Staff
 Outsourced



		Weekday Summer					Midday					Late Afternoon/Evening				
		Morning														
		M	T	W	Th	F	M	T	W	Th	F	M	T	W	Th	F
Rascal Room (Sm Prog)	700 sf	Children					Children									
Lg Program Rm	1,500 sf	Large Format Activities					Large Format Activities									
Strd Program Rm	1,000 sf															
Strd Program Rm	1,000 sf	Day Camps					Children's Day Camps									
Strd Prog Rm w/ Demo K	1,270 sf	Cooking Camp					Cooking Camp									
Art Program Rm	1,000 sf						Adult Art					Adult Art				
Art Program Rm	1,000 sf	Art Camps					Art Camps					Art				
Music Program Room	1,000 sf											Rehearsal				
Fitness Prog Rm	1,000 sf	Dance					Dance					Adult Fitness:				
Fitness Prog Rm	1,000 sf	Adult Fitness:										Dance				
Lg Fitness Prog Rm	2,500 sf	Step										Yoga Karate				
Multi Purp Rm	5,000 sf	Dance					Large Format Camps					Dance LAYC				
Sm Multi Purp Rm	2,500 sf	Yoga					Bingo Lunch movie lunch					Pilates				
Fitness Equip Rm	2,000 sf	Low-Impact Classes Trng/Workout					Low-Impact Workout Wkout					Workout Workout				
Teen Lounge	630 sf						Social Gathering					Social Gathering				
Sr Lounge	1,000 sf	Social Gathering					Social Gathering									
Game Room	830 sf						Gaming					Gaming				
Card Lounge	730 sf	Puzzles, Card Games and Lessons					Puzzles, Card Games and Lessons									
Children's Prog Rm	900 sf	Art					Art					Art				
Children's Prog Rm	900 sf	Mommy/Daddy and Me					Mommy/Daddy and Me									



		Weekday Summer					Midday					Late Afternoon/Evening				
		Morning														
		M	T	W	Th	F	M	T	W	Th	F	M	T	W	Th	F
Rascal Room (Sm Prog)	700 sf															
Lg Program Rm	1,500 sf	Large Format Activities					Large Format Activities									
Strd Program Rm	1,000 sf															
Strd Program Rm	1,000 sf	Day Camps					Children's Day Camps									
Strd Prog Rm w/ Demo K	1,270 sf	Cooking Camp					Cooking Camp									
Art Program Rm	1,000 sf						Adult Art					Adult Art				
Art Program Rm	1,000 sf	Art Camps					Art Camps								Art	
Music Program Room	1,000 sf											Rehearsal				
Fitness Prog Rm	1,000 sf		Dance					Dance				Adult Fitness:				
Fitness Prog Rm	1,000 sf	Adult Fitness:												Dance		
Lg Fitness Prog Rm	2,500 sf	Step		Step								Yoga	Karate		Karate	
Multi Purp Rm	5,000 sf	Dance					Large Format Camps							Dance		LAYC
Sm Multi Purp Rm	2,500 sf	Yoga					Bingo	Lunch	movie		lunch	Pilates				
Fitness Equip Rm	2,000 sf	Low-Impact Classes					Low-Impact		Workout		Wkout	Workout				
Teen Lounge	630 sf					Trng/Workout	Social Gathering					Social Gathering				
Sr Lounge	1,000 sf	Social Gathering					Social Gathering					Social Gathering				
Game Room	830 sf	Gaming					Gaming					Gaming				
Card Lounge	730 sf	Puzzles, Card Games and Lessons					Puzzles, Card Games and Lessons					Puzzles, Card Games and Lessons				
Children's Prog Rm	900 sf			Art					Art							Art
Children's Prog Rm	900 sf	Mommy/Daddy and Me					Mommy/Daddy and Me					Mommy/Daddy and Me				

Seniors
 Teens
 Multigenerational
 Children
 Adults
 Staff
 Outsourced





Recommended Interior Services

Listed by Priority Rank (1 of 2)

1	Large Group Activities	●	13	Youth Theater Rehearsal	●
2	Social Gathering - Seniors	●	14	Social Gathering - Teens	●
2	Social Gathering - General	●	15	Childrens' Services - Non-City Program	●
4	Fitness (w/o Equipment, sprung wood floor)	●	16	Theater Rehearsal (Los Altos Stage Company)	
5	Special Interest Classes	●	17	Dedicated Outside Organization Spaces	
6	Camps (Summer, Winter, Spring Break)	●	18	Gaming	
7	Art Room	●	19	Social Gathering - Adults	
8	Staff Offices & Support Space	●	20	Adult Education from High School District	
9	Table Games	●	21	Pop-up Clinic – Senior*	●
9	Gathering w/ Kitchen	●	22	Meeting Space	●
11	Fitness (w/ Equipment)	●			
12	Music (with Acoustic Design)	●			

● = Activities Included in Recommended Program

○ = Activities that can be included by Design w/o Additional Program Space



Recommended Interior Services Listed by Priority Rank (2 of 2)

23	Billiards / Pool - Senior	
24	Theater	
25	Study Center - Teen	
26	Ping Pong- Senior	●
27	Performance Center	
28	Coffee - Senior	●
28	Maker Space - Adult	
28	Misc. Adult Ed. from High School District	
28	Pool Table/ Ping Pong - Teen	
28	Technology	●
28	Teen - Basketball - Teen	
34	Temp Storage - Senior	

● = Activities Included in Recommended Program

○ = Activities that can be included by Design w/o Additional Program Space



Recommended Exterior Services

Listed by Priority Rank

1	Large Group Activities	●
2	Soccer	●
3	Baseball	●
4	Bocce Ball	●
5	Swim	
6	Adult Fitness	●
7	Skate Park	
8	Playground	●
9	Other Field Sports	●
10	Additional Soccer Field	
10	Basketball - Teen	
10	Softball Field	
13	Public Art	○

14	Picnicking	○
14	Volleyball - Teen	
16	Dog Park - Teen	
16	Quiet Garden	○
16	Underground Parking	○
19	Hangout (food, sitting) - Adult	
20	Art- Senior	○
20	Contemplative Space- Senior	○
20	Environmental Demo	
20	Sports Court - Teen	

● = Activities Included in Recommended Program
 ○ = Activities that can be included by Design w/o Additional Program Space



Program - Recommendation

- Maintain Architectural Program for Community Center with Scheduling Changes at **55,600 sf**



Program – Recommended Possible Changes

Increase

- Small Multi Purpose Room 2,500 sf
- Storage Areas 1,000 sf

Decrease

- Teen Lounge 630 sf
- Senior Card Room 730 sf



Workshop Input on Program

Program to Include

- More Meeting Space
- Art Space
- Dedicated space for Friends of Library
- Indoor Pool
- Skate Park / Art
- Outdoor path
- Maker's Space (in Art Space)

Higher Priority

- Swim as Phase 1
- Theater



Site Opportunities & Challenges





Community Workshop- Summary of Findings

- Maintain Open Feel
- Preserve/Increase Green Space
- Connect Theater and Community Center
- Connect Pool and Community Center
- Flexible Space
- Connection to Downtown
- Underground Parking
- Improve Pedestrian and Traffic Flow
- Multi-story Buildings
- Shared, Multi-generational Use
- Offsite Possibilities
 - Police
 - Theater
 - Pool



Community Workshop- Summary of Findings

- Maximize Land Use
- Increase Efficiency
- Similar Activities Together
- Roundabout
- Protect trees
- Preserve Orchard
- Purchase Corner Property
- Community Facilities closer to Downtown
- Incorporate food/drink
- Education/Community Center
- Pathways, plazas, and quiet gathering areas



Community Workshop Additional Input/Comments

- Question if Southeast quadrant is the right assumption
- Opportunity for collaboration of the school district and the City with community center
- Opportunity for private sector to finance project
- Focus on the proximity of uses to each other
- No current access to public swimming facility in Los Altos
- Opportunity for retail venues (like Cupertino facility)
- Desire for a food/drink venue, café in Community Center
- Understanding that existing programs at satellite Parks & Recreation facilities would continue
- Bocce Ball should be a lower priority
- Space for Friends of Library should be included in CC
- Library should provide space for Friends of Library
- Focus on what you can do well, don't try to do everything



Site Criteria





Top Prioritized Site Criteria

1	Connectivity to Downtown
2	Establishment of Multi-Generational Facilities
3	Sustainably Designed and Efficient Facilities
4	Safe Vehicle and Pedestrian Access
5	Cost
6	Maximized Shared Use of Program Elements
6	Enlarged and Enhanced Open Space
8	Protection of Significant Trees
9	Contextual Aesthetic that Maintains a Village Feel
10	Neighborhood Residential Concerns
11	Neighborhood Commercial Concerns



Other Site Criteria

- Promotion of Los Altos History
- Minimizing Exiting to / from Hillview
- Phasing Strategy Impacts
- 2 to 3 Story Buildings
- Connectivity to Each Other (all facilities)
- Attractive Gathering Space - The Destination
- Underground Parking
- Move Police From Civic Center
- Underground Parking (Maximize)
- Café / Food on Site
- Need True Small Orchard
- Fun(People, Friendly, Inviting)
- Traffic Circulation
- Place High Pedestrian Volume Near San Antonio and Low Person Volume Near Residential Areas
- Preserve Open Space and Orchard
- Underground Parking
- Move Police to MSC
- Move Police Closer To San Antonio



Exercise #1

- Comment on Opportunities & Challenges
- Refine, Rank & Recommend Design Criteria



Existing Site Analysis





Los Altos Civic Center Site



SERVICE + ENVIRONMENT = EXPERIENCE



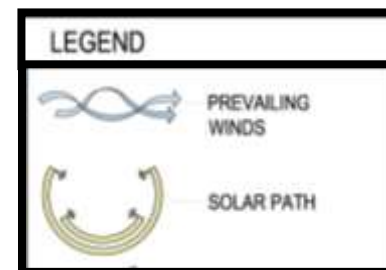
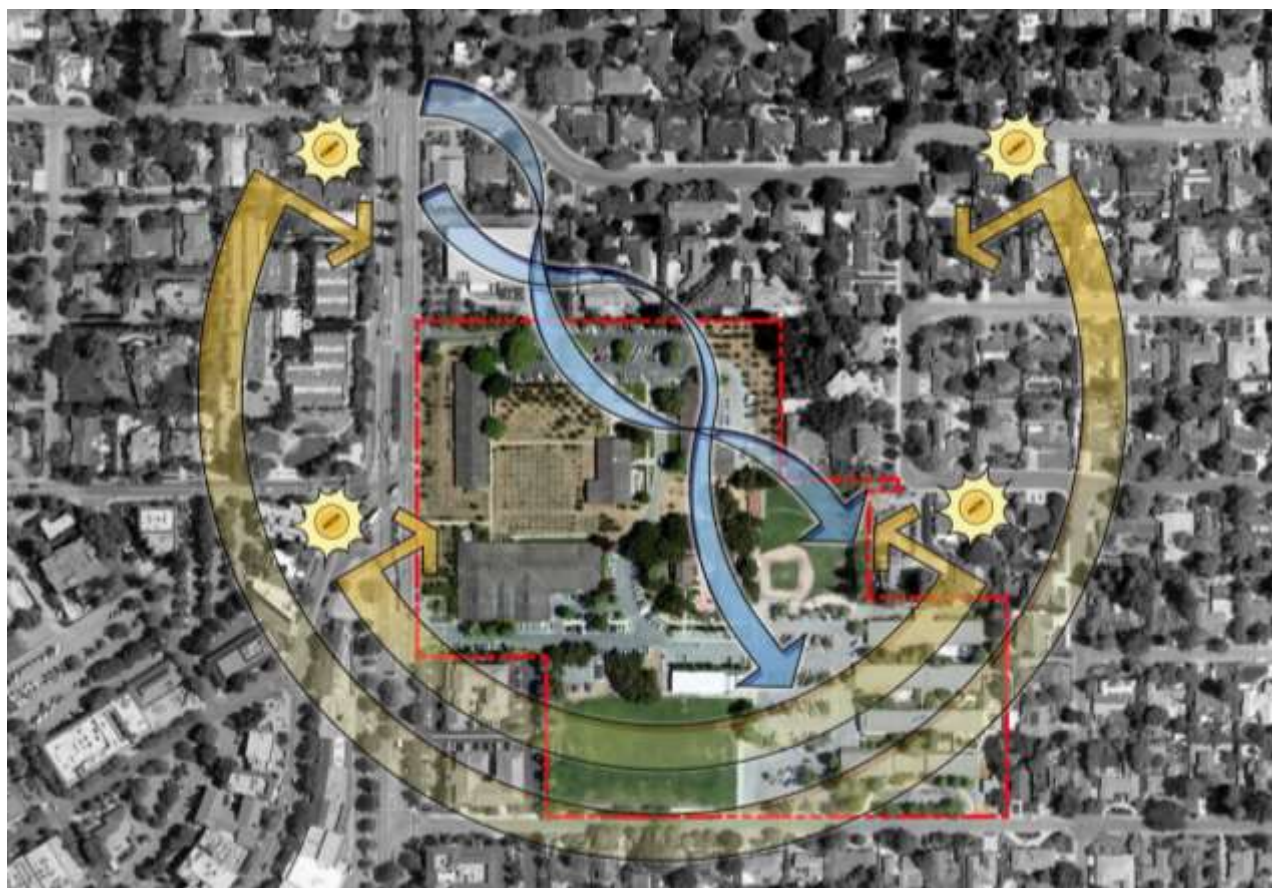


Site Analysis – Overall Site Aerial





Site Analysis – Sun and Wind





Site Analysis – Access and Circulation

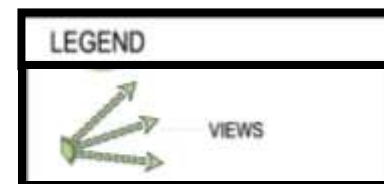


LEGEND	
	VEHICULAR TRAFFIC
	PEDESTRIAN TRAFFIC
	BUS STOP
	SITE ACCESS



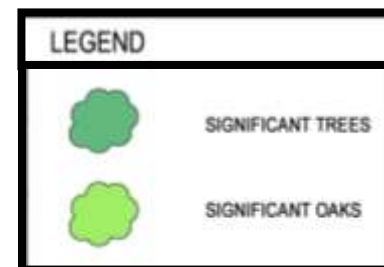


Site Analysis – Views





Site Analysis – Significant Trees





Site Analysis – Buildings to Remain



LEGEND	
	EXISTING TO REMAIN
	EXISTING MAY REMAIN





Site Analysis – Existing Parking Spots



LEGEND	
	PARKING AREA
	PARKING COUNT

343 EXISTING
PARKING SPACES





Site Analysis – Neighboring Land Use



Zoning Designations

- R1-S Single-Story Overlay
- R1-10 Single-Family
- R3-1 Multiple-Family
- OA Office-Administrative
- OAD/R3-1 Office/Multiple-Family
- CRS Commercial Retail Sales
- CRS/OAD Commercial Retail Sales/Office
- PCF Public and Community Facilities
- PUD Planned Unit Development





Existing Site Analysis - Summary





Community Center Focus

Defining Opportunities, Challenges & Impacts
Understanding
Learning from Commissions Key Issues





Exercise

- Priority for Community Center & Implications



Civic Center “Element” Placement

Review Site Studies

Refine Placement





Site Analysis – Design Consideration



SERVICE + ENVIRONMENT = EXPERIENCE





Option 2



Opportunities

- Good Orientation
- Security
- Distributed Outdoor Space
- Phasing
- Visible Entry
- Stronger Relation to Hillview

Constraints

- Isolated from Other Buildings



Option 3



Opportunities

- Parking Placement As-is
- Central Service Desk
- Solar Orientation
- Indoor Outdoor Relationships
- Intimate Outdoor Areas

Constraints

- Separate from Other Civic Services
- Pedestrian Circulation
- Closer to Neighbors
- Separate Wings / Division
- Harder to Secure





Option 4



Opportunities

- Better Noise Control
- Clear Entry
- Easy Access from Parking

Constraints

- Solar Orientation
- Farther from Hillview
- Farther from Other Buildings



Option 5



Opportunities

- Greens Space Adjacent to Field
- Parking as Buffer to Neighbors
- Closer to Other Buildings
- Phasing

Constraints

- Lack of Parking During Construction
- Solar Orientation
- Weak Hillview Entry Statement



Option 1



Opportunities

- Good Orientation
- Security
- Closer to Other Civic Center Facilities
- Regulation Sized Soccer Field
- Continuous Community Center Services
- Increase Parking Near Library

Constraints

- Temporary Loss of Soccer Field



Civic Center 2009 – Option 1



Opportunities

- Civic Presence
- Vehicle & Pedestrian Access
- Open Space
- Promotes History
- Shared Use
- Good Commercial Neighbor

Constraints

- Residential Neighbor Concerns



Civic Center 2009 – Option 2



Opportunities

- Good Village Aesthetic
- Protect Trees
- Good Residential and Commercial Neighbor
- Lower Cost

Constraints

- Less Open Space
- Less Facilities
- Phasing less ideal



Civic Center 2009 – Option 3



Opportunities

- Excellent Main Street Connection
- Promotes History
- Shared Use
- Multi Gen Facilities
- Good Commercial Neighbor
- Good Phasing

Constraints

- Some Residential Neighbor Concerns



Exercise #2 – Site Studies

- ❑ Part 1 - What is included in a Community Center?
 - ❑ What is located with the Community Center/or also fits in the south east quadrant?
 - ❑ What is included in Phase 1?
 - ❑ What is in south east quadrant but built in a future phase?
- ❑ Part 2 - Where are other remaining Civic Center elements placed?
 - ❑ Define entries, roadways and circulation
 - ❑ Consider connections to other Civic Center uses and Downtown
 - ❑ Consider Phasing – (need to demolish a building/element in placement)
- ❑ Grade your studies based on Design Criteria – Part 1 & 2
- ❑ Present the opportunities, challenges and impacts to the Site Studies



Instructions

- Place your chosen “Community Center” Elements in the Southeast Quadrant
- Beginning Assumption is to Include
 - Community Center
 - Soccer & Little League Field
 - 185 parking spots
- Complete Grading Sheet
 - Count “\$” for cost
- Place remaining Elements on Site
- Trace your Design



Summary of Findings





Summary of Findings





Public Comment





Conclusion

- Next Steps
 - Stakeholder Engagement Meeting, April 23rd
 - City Council Meeting, June 10th

- Feedback